

## Components

### Chassis

CoolerMaster CM690II



Steel body

Black in- and outside

Drive Bays: 4x 5.25 inch exposed  
6x 3.5 inch hidden

I/O Panel: 2x USB 2.0  
1x eSata  
1x Mic.  
1x Audio

Cooling Fans: 1x Front  
1x Rear  
1x Bottom optional  
2x Top optional  
2x Left optional

### Power Supply

Corsair AX850



Power 850 Watt

Fully modular

Max load:

3.3V - 25A

5V - 25A

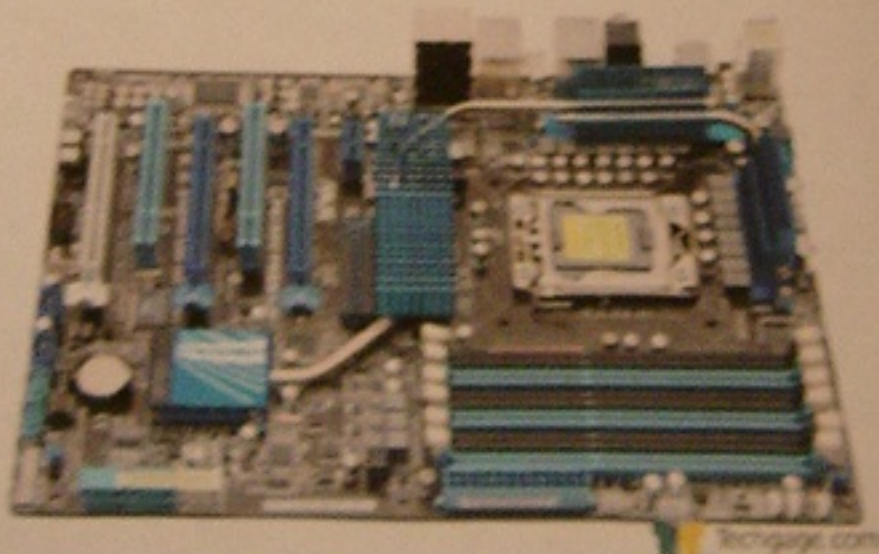
5Vsb - 3A

12V - 70A (single rail)

-12V - 0.5A

### Motherboard

Asus P6X58D Premium



LGA 1366 socket

Chipset Intel X58/ICH10R

System bus up to 6.4 GT/s

3x PCI Express 2.0 x 16 (16x8x8 or 16x16x1)

1x PCI Express x 1

2x PCI

8 channel HD Audio CODEC

6x SATA II 3.0Gb/s

2x SATA III 6.0Gb/s

2x USB 3.0/2.0

8x USB 2.0/1.1

**Processor**  
Intel i7-930



Freq. 2.8GHz  
QPI 4.8GT/s  
Cache 8MB

**Processor Cooler**  
CoolerMaster V8



**!!! Assembly problems !!!**  
**!!! Use different cooler !!!**

Fan speed 800-1800 RPM  
Fan airflow 69.7 CFM  
Noise level 17-21dBA  
Fan control PWM + VR control

**Memory**  
Corsair



3x2GB  
PC12800  
CL9  
1.65V

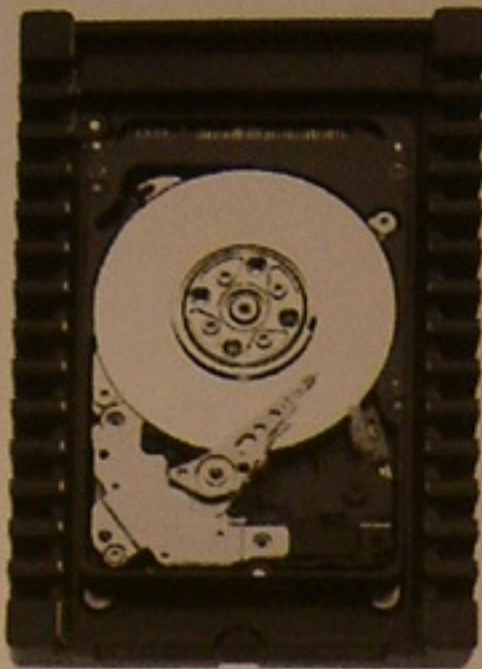
**Graphics card**  
MSI  
N460GTX HAWK



GPU	Geforce GTX 460
Memory size	1024 MB
Memory type	GDDR5
Memory bus	256 bits
Memory clock	3600 MHz
Processor clock	1560 MHz
Graphics clock	780 MHz
Output	Dual DVI-I + mini HDMI
Display resolution	max. 2560 x 1600
Cooling	Dual Fan PWM

## Harddisks

1x WD VelociRaptor



Capacity 150 GB  
Interface SATA II 3.0Gb/s  
Cache 16 MB  
Disk speed 10000 RPM

2x WD Caviar Black

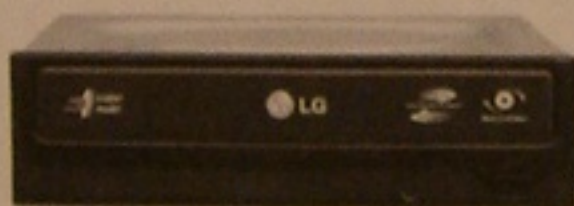


Capacity 500 GB  
Interface SATA II 3.0Gb/s  
Cache 32 MB  
Disk speed 7200 RPM

## CD-DVD r/w

LG

GH-22LS50



Interface SATA  
Read CD 48x, DVD 16x  
Write CD-R 48x, CD-RW 32x,  
DVD+R/-R, DVD+RW/-RW 6x,  
DVD+R/-R DL 12x

## Kosten

Chassis		€	69.--
Power Supply		€	165.--
Motherboard		€	265.--
Processor		€	229.--
Processor Cooler		€	60.--
Memory		€	113.--
Graphics Card		€	119.--
Harddisks	1x VelociRaptor	€	125.--
	2x Caviar Black	€	108.--
CD-DVD		€	30.--
		-----	
	<b>Totaal</b>	<b>€</b>	<b>1283.--</b>

## Optionals

Memory cooling	€	30.--
Extra motherboard cooling	€	20.--
Extra chassis cooling	€	30.--
Chassis modifications	€	20.--

---

## Windows prestatie-index

# 5,9

Processor	7,5
Memory	7,5
Grafisch	7,6
Grafisch 3D	7,6
Primaire HD	5,9

De prestatie-index is gebaseerd op de laagste score

(Score minimaal 1,0 en maximaal 7,9)



## CoolerMaster CM690II

Power Supply  
Corsair AX850  
(aanzuiging onderzijde uitstoot achterzijde)

Motherboard  
Asus P6X58D Premium

Harddisks SATAII 3.0Gb/s  
1x WD VelociRaptor 150GB  
2x WD Caviar Black 500GB

CD-DVD r/w  
LG GH-22LS50

Processor  
Intel i7-930

Processor Cooler  
CoolerMaster V8 (let op!! ingewikkelde  
montage bevestiging onderzijde moederboard  
extra fixatie aan te raden)

Memory  
Corsair 3x2GB

Graphics card  
MSI N460GTX Hawk

Kosten  
€ 1283

Windows prestatie-index 5,9

voor vervoer extra fixatie cooler en GrKrt

fixatie van de cooler opgehangen in rubbervatting

bovenzijde cooler afgedekt

uitstoot

afzuiging

extra fixatie GrKrt

aanzuiging

uitstoot

aanzuiging onderzijde

aanzuiging



de CM690II heeft een opengewerkte bodemplaat voor  
eenvoudiger bevestigen van de cooler

